

AMERICAN FIBER OPTIC PLUS INC



Tel: 323 319 4593
Email: sales@aofplus.com

Address:
6966 Pelham Rise Victor, NY 14564

www.aofplus.com



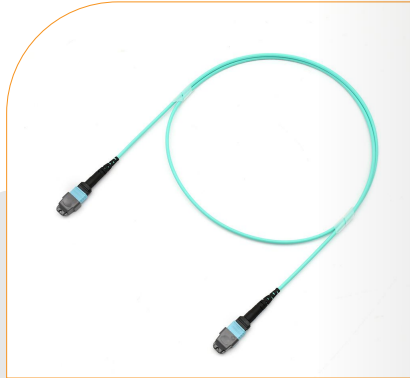
Brochure Fiber Optic Patch Cables/Adapters

www.aofplus.com

MTP Fiber Optic Patch Cable



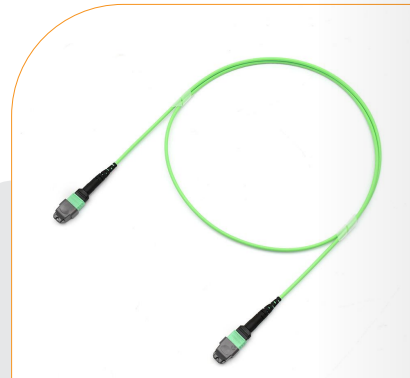
**MTP-MTP 8/12/24F
OS2 SM**



**MTP-MTP 8/12/24F
OM3 MM**



**MTP-MTP 8/12/24F
OM4 MM**



**MTP-MTP 8/12/24F
OM5 MM**

Features

- 100% optical inspection and testing
- Elite Low Loss: >0.35dB
- Optical performance meet data center requirements
- Bending sensitive Corning® SMF-28® Ultra SM and Clear Curve® MM fiber
- OFNR, OFNP UL-listed jacket
- IEC, EIA/TIA or Telecordia compliant
- Available in different lengths and colors

Applications

- Data Centers
- AI Cloud Infrastructure
- Backbone and Trunk Cabling
- High-Speed Network Infrastructure
- Telecommunications systems



MPO Fiber Optic Patch Cable



**MPO-MPO 8/12/24F
OS2 SM**



**MPO-MPO 8/12/24F
OM3 MM**



**MPO-MPO 8/12/24F
OS2 SM**



**MPO-MPO 8/12/24F
OM5 MM**

Features

- 100% optical inspection and testing
- Elite Low Loss: >0.35dB
- Optical performance meet data center requirements
- Bending sensitive Corning® SMF-28® Ultra SM and Clear Curve® MM fiber
- OFNR, OFNP UL-listed jacket
- IEC, EIA/TIA or Telecordia compliant
- Available in different lengths and colors

Applications

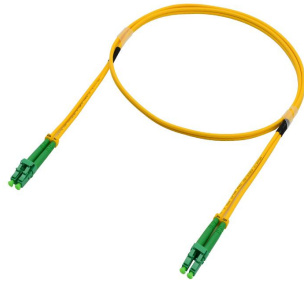
- Data Centers
- AI Cloud Infrastructure
- Backbone and Trunk Cabling
- High-Speed Network Infrastructure
- Telecommunications systems



LC Fiber Optic Patch Cable



**LC-LC Duplex
UPC OS2 SM**



**LC-LC Duplex
APC OS2 SM**



**LC-LC Duplex
OM3 MM**



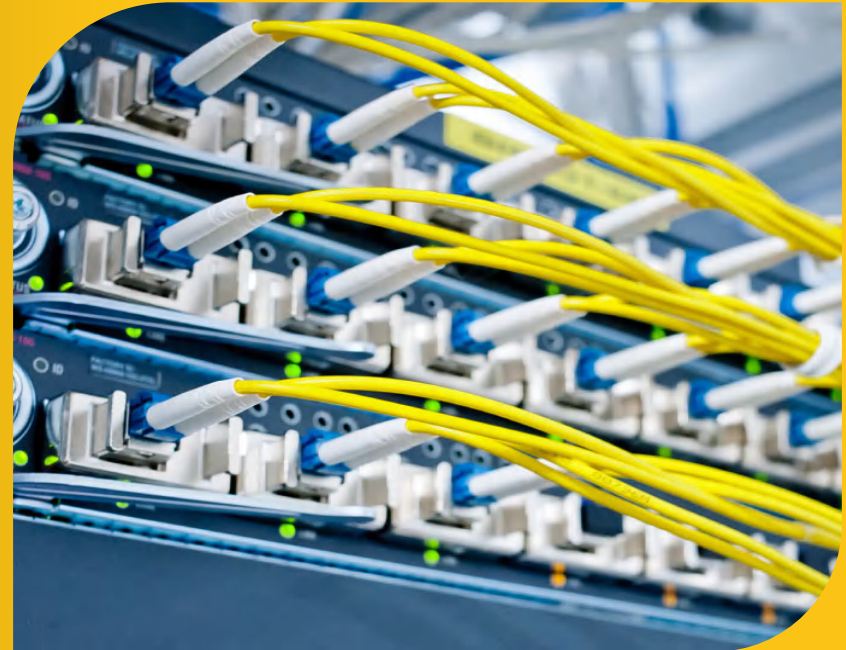
**LC-LC Duplex
OM4 MM**

Features

- Insertion Loss: <0.3dB, Return Loss: UPC:>50dB, APC: >60dB
- Bending sensitive Corning® SMF-28® Ultra SM and ClearCurve® MM fiber
- OFNR, OFNP UL-listed jacket
- IEC, EIA/TIA or Telecordia compliant
- Available in different lengths and colors

Applications

- Data Centers
- AI Cloud Infrastructure
- Backbone and Trunk Cabling
- High-Speed Network Infrastructure
- Telecommunications systems



SC Fiber Optic Patch Cable



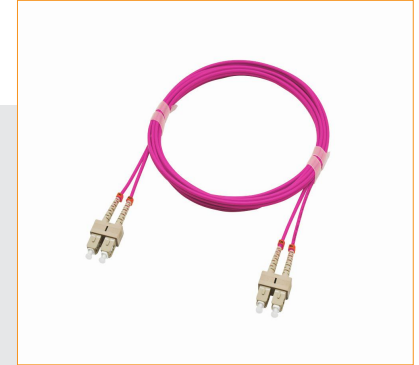
**SC-SC Duplex
UPC OS2 SM**



**SC-SC Duplex
APC OS2 SM**



**SC-SC Duplex
PC OM3 MM**



**SC-SC Duplex
PC OM4 MM**

Features

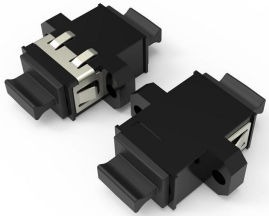
- Insertion Loss: <0.3dB, Return Loss: UPC:>50dB, APC: >60dB
- Bending sensitive Corning® SMF-28® Ultra SM and ClearCurve® MM fiber
- OFNR, OFNP UL-listed jacket
- IEC, EIA/TIA or Telecordia compliant
- Available in different lengths and colors

Applications

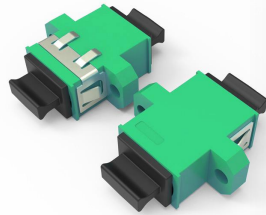
- Data Centers
- AI Cloud Infrastructure
- Backbone and Trunk Cabling
- High-Speed Network Infrastructure
- Telecommunications systems



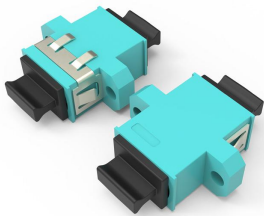
Fiber Optic Adapter



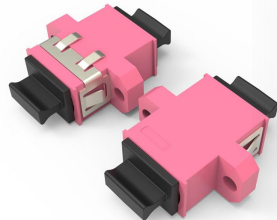
**MPO/UPC Adapter
OS2 SM**



**MPO/APC Adapter
OS2 SM**



**MPO Adapter
OM3 MM**



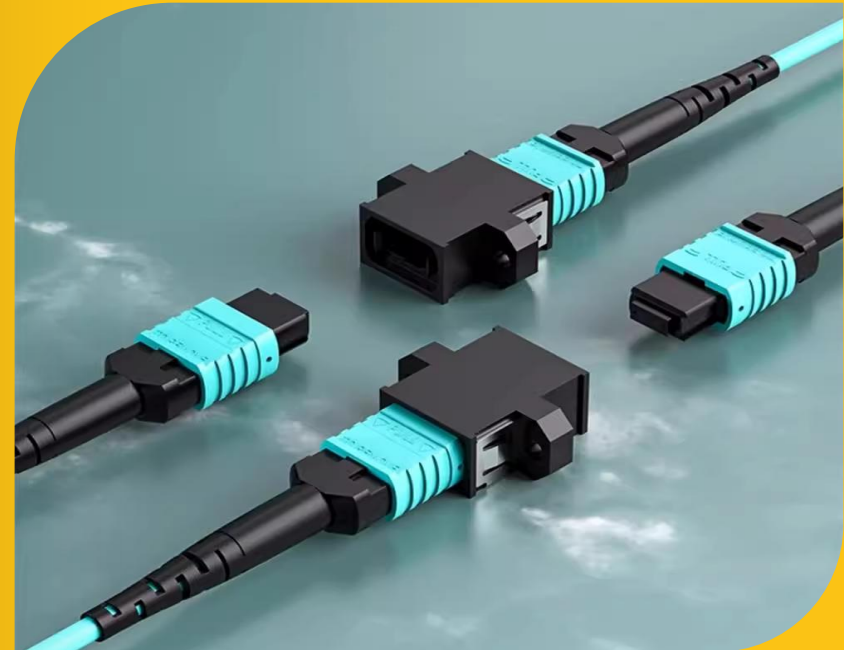
**MPO Adapter
OM4 MM**

Features

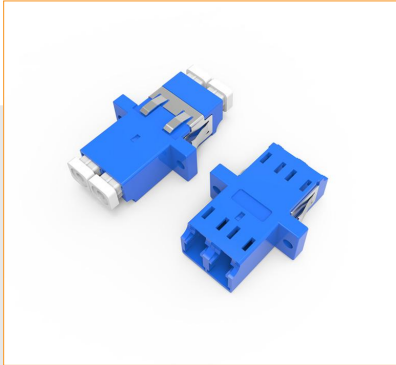
- Low Insertion Loss : $\leq 0.2\text{dB}$, Durability: >1000 mating times
- Precision alignment to minimize signal loss,
- Ceramic alignment sleeve for durability
- Simplex, duplex and quad available to choose
- High-density port organization
- IEC, EIA/TIA or Telecordia compliant

Applications

- Data Centers
- AI Cloud Infrastructure
- Backbone and Trunk Cabling
- High-Speed Network Infrastructure
- Telecommunications systems



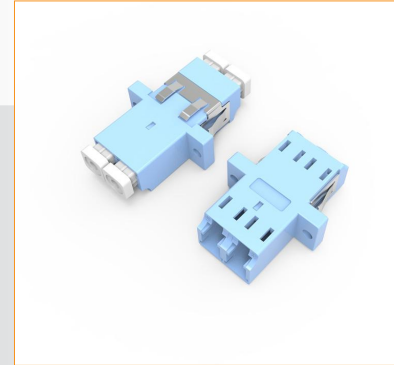
Fiber Optic Adapter



**LC/UPC Adapter
Duplex OS2 SM**



**LC/APC Adapter
Duplex OS2 SM**



**LC/PC Adapter
Duplex OM3 MM**



**LC/PC Adapter
Duplex OM4 MM**

Features

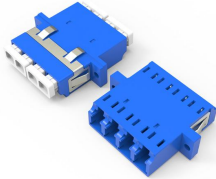
- Low Insertion Loss : $\leq 0.2\text{dB}$, Durability: >1000 mating times
- Precision alignment to minimize signal loss,
- Ceramic alignment sleeve for durability
- Simplex, duplex and quad available to choose
- High-density port organization
- IEC, EIA/TIA or Telecordia compliant

Applications

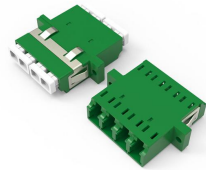
- Data Centers
- AI Cloud Infrastructure
- Backbone and Trunk Cabling
- High-Speed Network Infrastructure
- Telecommunications systems



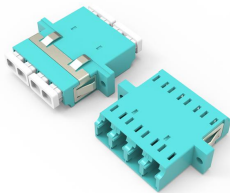
Fiber Optic Adapter



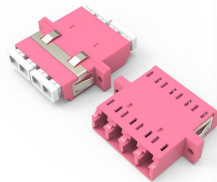
**LC/UPC Adapter
Quad OS2 SM**



**LC/APC Adapter
Quad OS2 SM**



**LC/PC Adapter
Quad OM3 MM**



**LC/PC Adapter
Quad OM4 MM**

Features

- Low Insertion Loss: $\leq 0.2\text{dB}$, Durability: >1000 mating times
- Precision alignment to minimize signal loss,
- Ceramic alignment sleeve for durability
- Simplex, duplex and quad available to choose
- High-density port organization
- IEC, EIA/TIA or Telecordia compliant

Applications

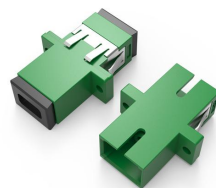
- Data Centers
- AI Cloud Infrastructure
- Backbone and Trunk Cabling
- High-Speed Network Infrastructure
- Telecommunications systems



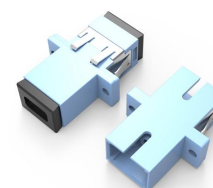
Fiber Optic Adapter



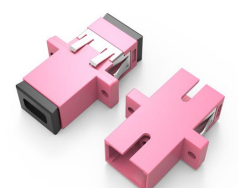
**SC/UPC Adapter
Simplex OS2 SM**



**SC/APC Adapter
Simplex OS2 SM**



**LC/PC Adapter
Simplex OM3 MM**



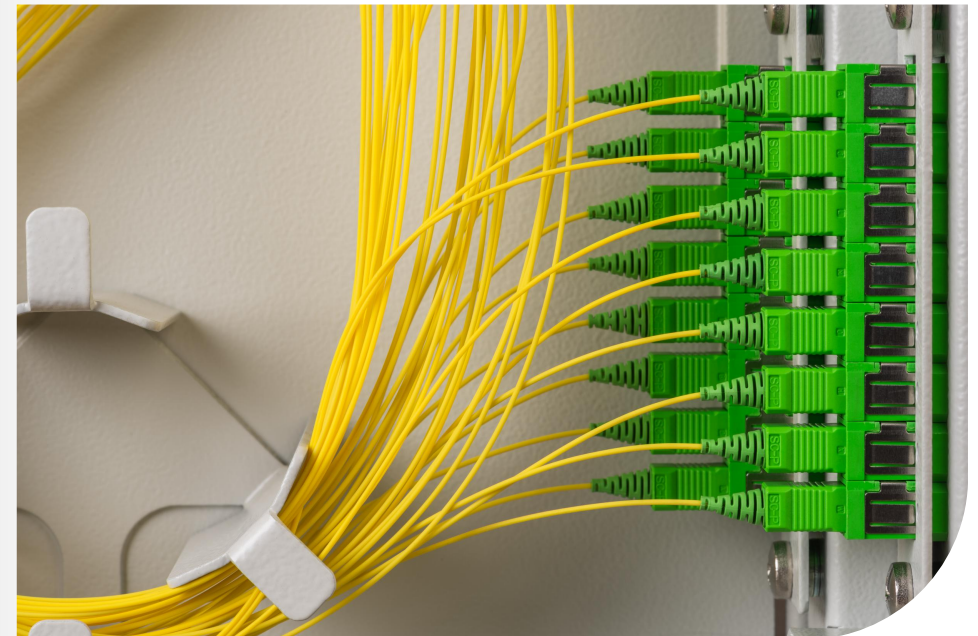
**LC/PC Adapter
Simplex OM4 MM**

Features

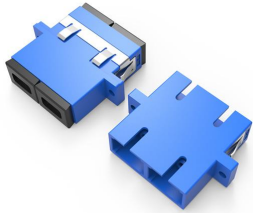
- Low Insertion Loss : $\leq 0.2\text{dB}$, Durability: >1000 mating times
- Precision alignment to minimize signal loss,
- Ceramic alignment sleeve for durability
- Simplex, duplex and quad available to choose
- High-density port organization
- IEC, EIA/TIA or Telecordia compliant

Applications

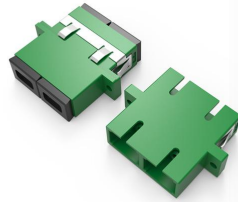
- Data Centers
- AI Cloud Infrastructure
- Backbone and Trunk Cabling
- High-Speed Network Infrastructure
- Telecommunications systems



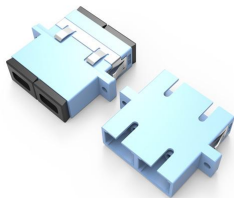
Fiber Optic Adapter



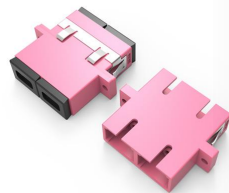
**SC/UPC Adapter
Duplex OS2 SM**



**SC/APC Adapter
Duplex OS2 SM**



**SC/PC Adapter
Duplex OM3 MM**



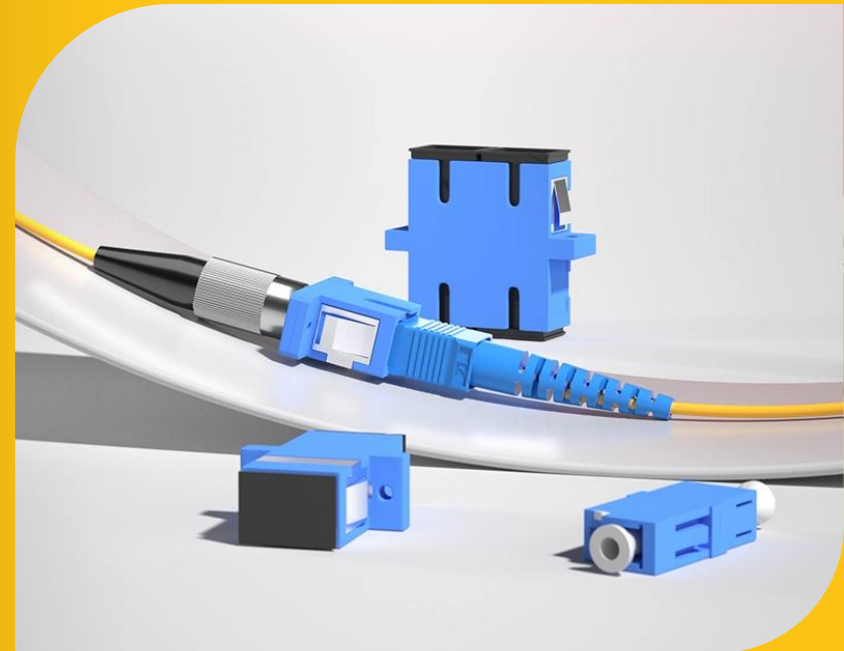
**SC/PC Adapter
Duplex OM4 MM**

Features

- Low Insertion Loss: $\leq 0.2\text{dB}$, Durability: >1000 mating times
- Precision alignment to minimize signal loss,
- Ceramic alignment sleeve for durability
- Simplex, duplex and quad available to choose
- High-density port organization
- IEC, EIA/TIA or Telecordia compliant

Applications

- Data Centers
- AI Cloud Infrastructure
- Backbone and Trunk Cabling
- High-Speed Network Infrastructure
- Telecommunications systems



Fiber Optic Keystone Jack Adapter



**MPO/UPC Keystone
Jack OS2 SM**



**MPO/APC Keystone
Jack OS2 SM**



**MPO Keystone Jack
OM3 MM**



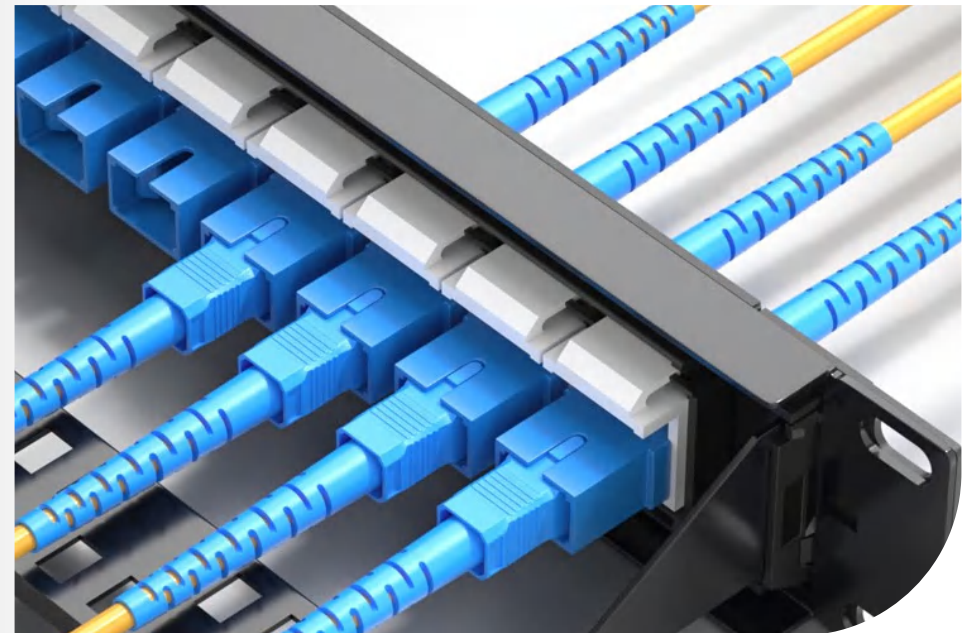
**MPO Keystone Jack
OM4 MM**

Features

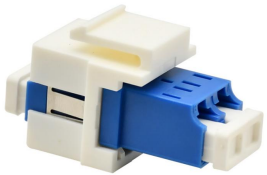
- Low Insertion Loss: $\leq 0.2\text{dB}$, Durability: >1000 mating times
- Precision alignment to minimize signal loss,
- Ceramic alignment sleeve for durability
- Simplex, duplex and quad available to choose
- High-density port organization
- IEC, EIA/TIA or Telecordia compliant

Applications

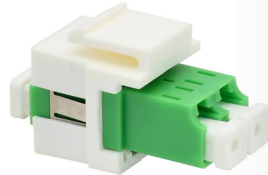
- Data Centers
- AI Cloud Infrastructure
- Backbone and Trunk Cabling
- High-Speed Network Infrastructure
- Telecommunications systems



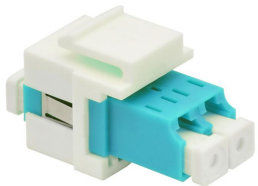
Fiber Optic Keystone Jack Adapter



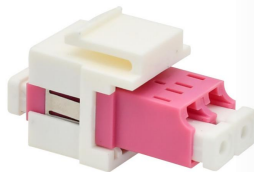
**LC/UPC Keystone
Jack OS2 SM**



**LC/APC Keystone
Jack OS2 SM**



**LC/PC Keystone
Jack OM3 MM**



**LC/PC Keystone
Jack OM4 MM**

Features

- Low Insertion Loss: $\leq 0.2\text{dB}$, Durability: >1000 mating times
- Precision alignment to minimize signal loss,
- Ceramic alignment sleeve for durability
- Simplex, duplex and quad available to choose
- High-density port organization
- IEC, EIA/TIA or Telecordia compliant

Applications

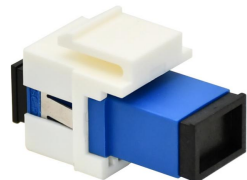
- Data Centers
- AI Cloud Infrastructure
- Backbone and Trunk Cabling
- High-Speed Network Infrastructure
- Telecommunications systems



Fiber Optic Keystone Jack Adapter



**SC/UPC Keystone
Jack OS2 SM**



**SC/APC Keystone
Jack OS2 SM**



**SC/PC Keystone
Jack OM3 MM**



**SC/PC Keystone
Jack OM4 MM**

Features

- Low Insertion Loss: $\leq 0.2\text{dB}$, Durability: >1000 mating times
- Precision alignment to minimize signal loss,
- Ceramic alignment sleeve for durability
- Simplex, duplex and quad available to choose
- High-density port organization
- IEC, EIA/TIA or Telecordia compliant

Applications

- Data Centers
- AI Cloud Infrastructure
- Backbone and Trunk Cabling
- High-Speed Network Infrastructure
- Telecommunications systems

